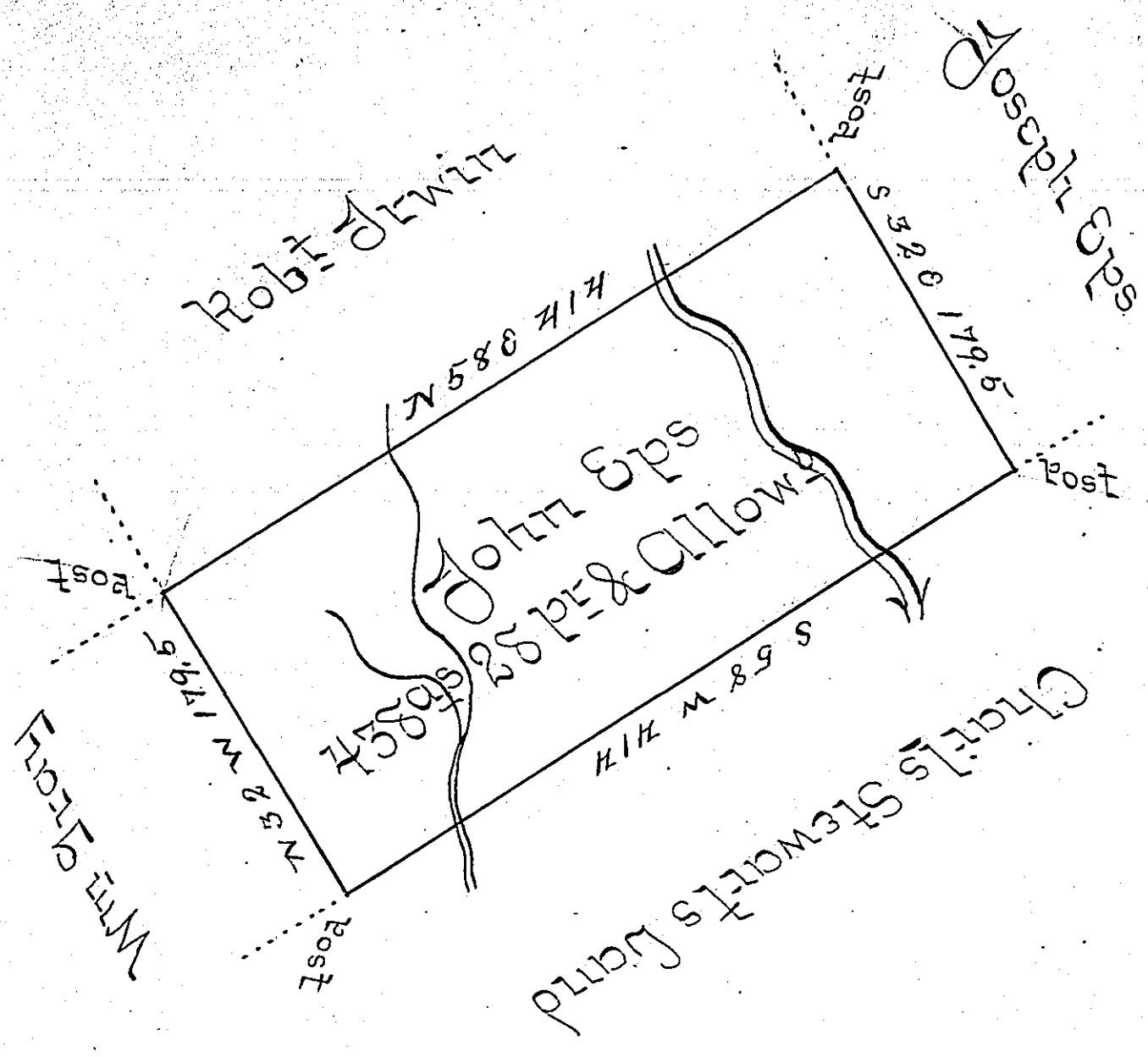


61.



By virtue of a Warrant dated the 1st of September 1794 Survey the 20th of Decemb^r 1794 unto John Eps the above described tract of four hundred & thirty eight Acres 25 perches situate adjoining land of Wm Gray & others about six miles north of Wilksbury Luzerne County

By Wm^r Montgomery D.S.
 No Don^t Brodhead Esq^r
 Survey^r Gen^l of Penns^a

1794

IN TESTIMONY that the above is a copy of the original remaining on file in the Department of Internal Affairs of Pennsylvania, made conformably to an Act of Assembly approved the 16th day of February, 1833, I have hereunto set my Hand and caused the Seal of said Department to be affixed at Harrisburg, this fifth day of August 1902.

James W. Latta
 Secretary of Internal Affairs.